

KNAUER AZURA Analytical HPLC

For analytical HPLC of radioactive substances



The perfect completion for your Modular-Lab system - The all-new gradient KNAUER AZURA analytical HPLC system

Description

The laboratory equipment of the Modular-Lab family has been specifically designed to allow the production of a variety of radiotracers. The quality control of the products is an essential step of this production. Therefore the KNAUER AZURA analytical HPLC gives a perfect solution for your Quality Control process.

The HPLC system consists of the AZURA Assistant for Compact HPLC HPG, a high pressure gradient pump including 2 channel degasser, AZURA UV/VIS Detector UVD 2.1L (optional PDA), AZURA Eluent tray E 2.1L, a manual 6-port/3-channel injection valve (optional autosampler), AZURA Capillary Start-up kit, Analytical Flow Cell UV, the Interface Box IFU 2.1 and comes with the ClarityChrom(R) CDS software in combination with HPLC-Scan and computer.

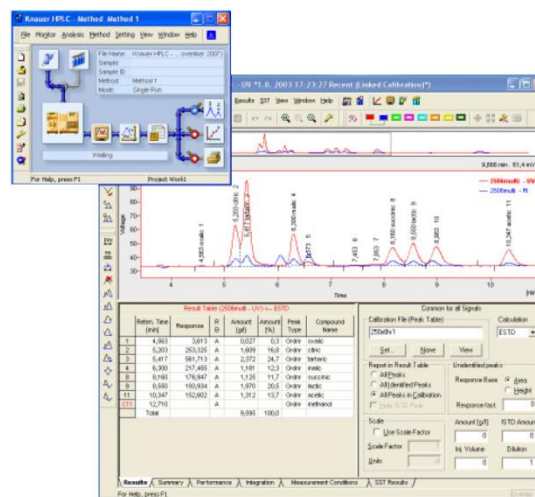
The timeless, elegant design of the AZURA elements is optimized for user-friendly operation. The removable front gives an easy access to the functional modules. Guides for capillaries and tubings protect sensitive connections. Three colored LEDs indicate the element's status at one glance. Advanced safety aspects make working with AZURA safer than ever: The intelligent drainage system guides liquid from any leak to the leak sensor that stops the system as soon as liquid is detected. A leakage tray collects leaked liquid.

Advantages

The AZURA gradient HPLC system is a perfect, cost-efficient complement to your Modular-Lab system. Pharmacopoeia-defined analysis processes for certain tracers are available (further information upon request) and support for establishing user methods can be offered. The multifunctionality of the system allows routine analysis for PET tracers based on positron and beta emitting nuclides. For many tracers a ready-to-go operating routine is available, but also customized solutions for your analytical problems can be developed.

ClarityChrom Software

The AZURA gradient HPLC system runs with ClarityChrom, an easy-to-use Chromatography Data System for workstations. The optional extensions for GC control, PDA, GPC and MS allow using the software for a wide spectrum of applications. Many different parameters such as pressure, activity detector readings, flow rates, UV-reading can be monitored easily online. Reports containing all relevant data and information are created automatically after each run. All data is recorded according to GMP requirements.



Key Features

- Reliable and GMP compliant
- Stable baseline due to the integrated degasser
- Gradient pump: two pump units, pressure transducer and solvent mixing chamber for low pulsation eluent supply
- Optional control unit allows direct control of all integrated modules
- Leakage protection and management
- Detection: single wavelength, range from 190 - 750 nm
- Flow rates from 10 µl/min up to 10 ml/min

KNAUER AZURA Analytical HPLC

For analytical HPLC of radioactive substances

Technical Data

Module Characteristics

AZURA Assistant for Compact HPLC HPG

Dimensions: 361 x 158 x 523 mm (W x H x D)

Integrated modules: High pressure gradient pump module with 10 ml stainless steel pump head, Smartmix 350, Degasser DG 2.1S

Solvent delivery: Flow Rate Range: 0.01 - 10 ml/min; 0.01 ml/min increments; Flow rate Accuracy: $\pm 1\%$; Flow Rate Precision: $< 0.5\%$ RSD

Degasser Module: 2; Degassing Method: Gas permeation through a fluoropolymere membrane; Max. Flow Rate: 10.0 ml/min; Pressure Decline: 1.37 mm Hg/ml/min; Max Pressure Stability: 7 bar; Dead Volume: 285 μ l per channel

AZURA UV/VIS Detector UVD 2.1L

Dimensions: 361 x 158 x 523 mm (W x H x D); 5.9 kg

Detector type: Variable single wavelength UV/VIS detector; Light source: Deuterium (D2) lamp with integrated GLP chip; Wavelength range 190 - 750 nm; Wavelength accuracy: ± 2.5 nm; Wavelength precision: 0.3 nm (ASTM E275-93); Noise: $\pm 1.5 \times 10^{-5}$ AU at 254 nm (ASTM E1657-98); Drift: 3.0×10^{-4} AU/h at 254 nm (ASTM E1657-98); Linearity: > 2.0 AU at 270 nm (ASTM E1657-98); Control: Digital - LAN-DHCP, remote connector; Analog - wavelength control; Manual - Control Unit (optional)

AZURA Eluent tray E 2.1L

Dimensions: 364 x 85 x 523 mm (W x H x D); 3.4 kg

Storage of up to 6 x 1000 ml bottles; Inlay removable for cleaning; Removable front with capillary guide; Drainage system

Manual 6-port/3-channel injection valve

Manual injection valve; Stainless steel; Including accessories; Autosampler on request (optional)

Analytical Flow Cell UV

Body Material: stainless steel with heat exchanger; Path Length: 10 mm; Flow Cell Volume: 10 μ l; Inner diameter: 1.1 mm

Additional Information

Power supply

100 - 240V; 50 - 60 Hz; 75W

Software

ClarityChrom (R) CDS, single instrument license

PDA option: 3D chromatogram, peak purity analysis, spectrum search in self-made or commercial spectra library

Included HPLC Kit

HPLC column; HPLC-Scan remote detection unit; Detector; High voltage cable; Shielded holder and Flow Cell assembly; Mini PC; PEEK tube; PEEK fittings; PEEK sample loop; Luer adapters; Flangeless fittings nuts; FEP tube; Cutting pliers for capillaries; Vial; Laboratory bottles

**Eckert & Ziegler
Eurotope GmbH**

Robert-Rössle-Strasse 10
13125 Berlin
Germany

Phone: +49 30 941084 197
Fax: +49 30 941084 470

eurotope@ezag.de
www.ezag.com/radiopharma

Your contact in USA & Canada:
Eckert & Ziegler Radiopharma, Inc.

63 South Street, Suite #110
Hopkinton MA 01748
USA

Phone: +1 508 497 0060
Fax: +1 508 497 0061

eurotope@ezag.com
www.ezag.com/radiopharma